

American Dental Association

ADACommons

[ADA Presidents](#)

[Special Collections](#)

1977

ADA President 1889-1890: Matthew Whildin Foster

American Dental Association

Follow this and additional works at: <https://commons.ada.org/presidents>



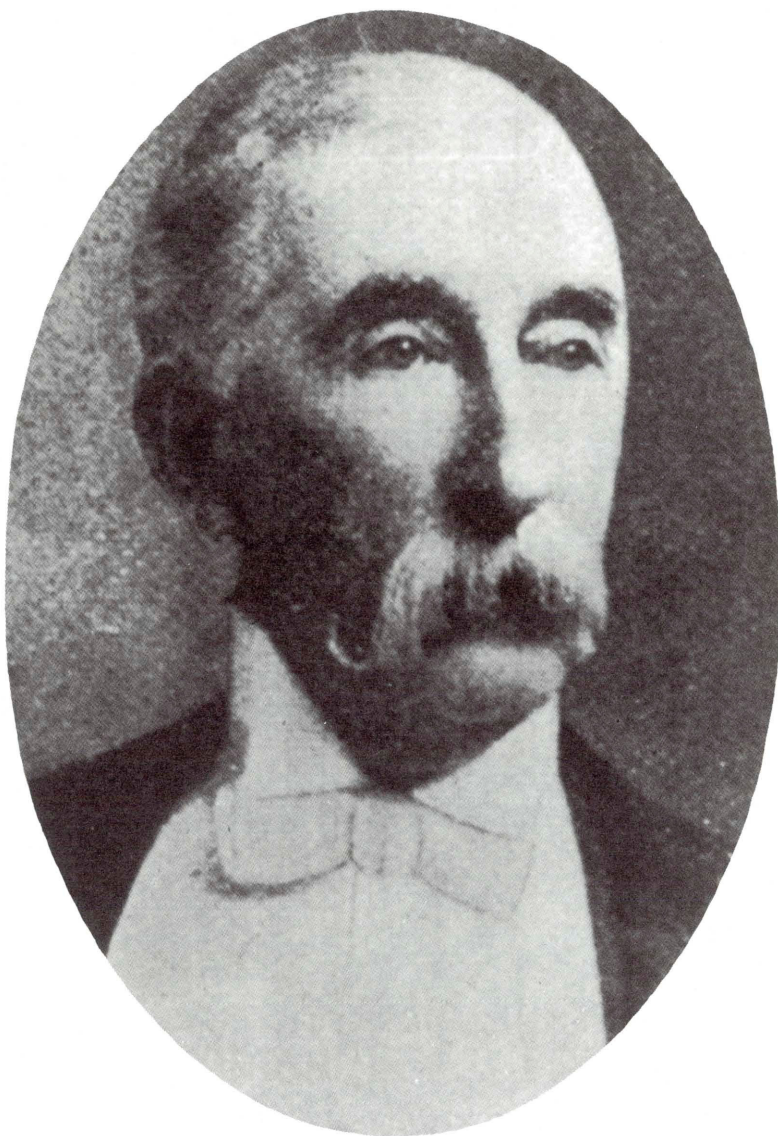
Part of the [Dentistry Commons](#), [History of Science, Technology, and Medicine Commons](#), and the [Nonprofit Administration and Management Commons](#)

Recommended Citation

American Dental Association, "ADA President 1889-1890: Matthew Whildin Foster" (1977). *ADA Presidents*. 39.

<https://commons.ada.org/presidents/39>

This Article is brought to you for free and open access by the Special Collections at ADACommons. It has been accepted for inclusion in ADA Presidents by an authorized administrator of ADACommons. For more information, please contact commons@ada.org.



Melville D. Foster

Matthew Whildin Foster

1889-1890

Doctor Foster, of Baltimore, was elected twenty-ninth president of the Association at the 1889 meeting at Saratoga Springs, New York. He had been first vice president in 1884-1885.

Doctor Foster was dean of the Baltimore College of Dental Surgery for 20 years. He served as president of the Maryland State Dental Association and was twice elected president of the National (Southern) Dental Association. He was born in Philadelphia in 1837 and died in 1914.

The Sherman Anti-Trust law was enacted in 1890. The first Pan-American Conference was held in Washington, establishing the Pan-American Union, an information bureau. The Sioux reservation of 11,000,000 acres was ceded to the United States. The eleventh census counted 62,622,250 persons in the United States.